

# **Greater Columbia Behavioral Health LLC (GCBH) Administrative Services Organization (ASO) CY24 Preliminary Budget**

---

## **At A Glance Budget Changes:**

### **Addition:**

1. 15% Increase to PMPM's for Crisis Services Funding (HCA and MCO)
2. ARPA COVID Funding – July 2023 – September 2025
3. ASO Utilizing ARPA Grant to cover the cost Regional Crisis Line Provider - VOA for the State Only portion – Allowing for additional State Funding to go out to the Crisis System.
4. Extension of unspent COVID Grant utilization until December 31, 2023.
5. Additional AOT Services Funding
6. Additional HARPS Expansion Funding

### **Deletions:**

1. Removal of WASEC Grant

**Greater Columbia Behavioral Health LLC  
(GCBH)  
Administrative Services Organization (ASO)  
CY24 Preliminary Budget**

---

**Budget Narrative**

# GCBH-ASO CY24 Preliminary Budget

## Budget Narrative

---

### INTRODUCTION

On January 1, 2024 the contract with the Washington State Healthcare Authority (HCA) for provision of state-only crisis services and additional state only specific programs will continue. On this same day, the ASO will also continue administering Medicaid Crisis Services contracts with the (4) Managed Care Organizations (MCO).

Information gathered during an extensive contract review process performed by both HCA and the 4 MCOs played a large role in the development of the attached budget. Program sustainability and available funding was also considered.

This preliminary budget proposal provides the ASO with the resources to continue to be successful as an ASO. The ASO business office is allowed up to a 10% Administration and 5% Direct Service Support with the remaining 85% of total State Only and Medicaid Crisis Revenue being paid out for direct services. ASO reserve balances remain at \$1,796,298.00 as required per contract.

## NARRATIVE INSTRUCTIONS

The following budget narrative has been created to be used in coordination with the following attachments:

Attachment-1	GCBH-ASO CY24 Preliminary R&E Estimate - DRAFT
Attachment-2a&b	GCBH-ASO CY24 Preliminary Operating Budget - DRAFT
Attachment 3	GCBH-ASO Organizational Chart
Attachment-4	GCBH-ASO FM804 - Funding Allocation Policy - DRAFT
Attachment-5	GCBH-ASO CY24 Preliminary Budget Notice Hearing –
Attachment-6	GCBH-ASO Resolution #24-01 CY24 Budget - DRAFT

The narrative will attempt to follow the same order as line items appear within the budget. Each line item or section of the budget will be described using a brief narrative.

The following 4 abbreviations have been listed down the far right-hand column of the budget document. These items are specific to this budget document and are used to describe the function and/or funding stream associated with each individual item.

**(MO) Medicaid Only:** Revenue or Expenditure type is funded solely with Medicaid resources.

**(PT) Pass-Through:** This describes a revenue stream or expenditure type that is considered 100% pass-through. No administrative load is available to the ASO.

**Split:** Term used to describe instances where either the revenue stream for expenditure type has been split using a standard ASO cost allocation methodology.

**(SO) State-Only:** Revenue or expenditure type is funded solely with State-Only resources.

### (Attachment-1 & 2) Preliminary Budget

#### CY24 Revenue Budget

*Detailed information used to determine estimates for the two largest revenue streams (Medicaid and State-Only) have been provided on Attachment-1 of the preliminary budget. All other amounts were taken directly from the final HCA state-only contract amendment. (Received July 2023, plus the 15% increase per Legislative Mandates)*

**Federal Block Grant (MHBG-Primary) Mental Health:** Regional Funding allocation for CY24 per ASO-HCA contract and approved MHBG Plan. **(PT)**

**Federal Block Grant (SABG-Primary) Substance Use Disorder:** Regional Funding Allocation for CY24 per ASO-HCA contract and approved SABG Plan. **(PT)**

**Federal Block Grant (MHBG-COVID) COVID Mental Health:** Regional Funding allocation for July 2021 thru December 2023 per ASO-HCA contract and approved MHBG-COVID Plan. (PT)

**Federal Block Grant (SABG-COVID) Substance Use Disorder:** Regional Funding allocation for July 2021 thru December 2023 per ASO-HCA contract and approved SABG-COVID Plan. (PT)

**Federal Block Grant (MHBG-ARPA) ARPA Mental Health:** Regional Funding allocation for July 2023 thru September 2025 per ASO-HCA contract and approved MHBG-ARPA Plan. (PT)

**Federal Block Grant (SABG-ARPA) ARPA Substance Use Disorder:** Regional Funding allocation for July 2023 thru September 2025 per ASO-HCA contract and approved SABG-ARPA Plan. (PT)

**Federal Block Grant Peer Bridger:** Regional Funding allocation for CY24 per ASO-HCA contract. (PT)

**Federal Block Grant SB 5071 - Full FY amount available - Provider cost of monitoring CR/LRA State Hospital discharged individual:** Funds to support the treatment services for individuals released from a state hospital in accordance with RCW 10.77.086(4), competency restoration. BH-ASOs may submit an A-19, not to exceed \$9,000 per Individual. Amounts are statewide pooled funds and are limited to funds available. (PT)

**Federal Block Grant - HARPS (Housing and Recovery through Peer Services) - GRANT:** Grant for staffing for housing subsidies program for individuals with BH issues per ASO-HCA Contract. (PT)

**CBRA (Community Behavioral Health Rental Assistance Program) GRANT:** Grant for long-term housing subsidies for individuals with BH conditions per ASO-DOC Contract. (PT)

**State-Only Revenue:** Regional allocation of State-Only Revenue per HCA contract released July 2023 plus 15% Legislative Mandated Increase added effective January 2024. (SO)

**CJTA Base and Addtl Proviso Funding:** Per CY24 ASO contract. (PT)

**DCA Proviso Funding:** Per CY24 ASO contract. (PT)

**Jail Proviso Funding:** Per CY24 ASO contract. (PT)

**Proviso 5480 Funding:** Per CY24 ASO contract. *ITA Billing Cost Charges* (PT)

**Trueblood Misdemeanor Diversion Funds:** Funds for non-Medicaid costs associated with serving individuals in crisis triage, outpatient restoration, Forensic PATH, Forensic HARPS, or other programs that divert individuals with behavioral health disorders from the criminal justice system. (SO)

**SB 5092(65) Added Crisis Teams/including Child Crisis Teams:** Funds to support the purchase of new mobile crisis team capacity or enhancing existing mobile crisis staffing and to add or enhance youth/child Mobile crisis teams. (SO)

**HB 1773 AOT LRA/LRO FTE Coordinator to ASO** – Funds for each BH-ASO to employ or subcontract an Assisted Outpatient Treatment Program Coordinator. The AOT Coordinator will oversee the system coordination and legal compliance for assisted outpatient treatment under RCW 71.05.148 and RCW 71.34.755. (SO)

**HB 1773 AOT LRA/LRO Service and Hearing Funds** – Funding for treatment and hearing costs specific to enhanced AOT LRA/LRO Program. (SO)

**SB 5476 Blake Decision Navigator Program** – Funding available for the recovery navigator plan that meets program requirements including demonstrating the ability to fully comply with statewide program standards. (SO)

**Behavioral Health Enhancements Funding:** Funding for employee recruitment and retention for the implementation of regional enhancement plans originally funded under ESSB 6032 and continued in ESHB 1109.SL Section 215(23). State Only Portion (PT)

**E&T Discharge Planners:** Funds received for a position solely responsible for discharge planning. (PT)

**FYSPRT Revenue:** Per CY24 ASO contract. **Split ASO Staff and FYSPRT Program Costs** (SO)

**HARPS (Housing and Recovery through Peer Services) – State Only Portion:** Funding for services for housing subsidies for individuals with BH issues per ASO-HCA Contract. (PT)

**Governor's Housing/Homeless Initiative:** Funding for Rental Vouchers and Bridge Program Funds to create a rental voucher and bridge program and implement strategies to reduce instances where an individual leave a state operated behavioral or private behavioral health facility directly into homelessness. Funds must be prioritized for individuals being discharged from state operated behavioral health facilities. (PT)

**ITA Judicial (Out of ASO) Benton and Franklin Counties:** Estimated ITA judicial revenue GCBH will attempt to recover from other ASOs for ITA commitments held in Benton and Franklin County courts. These resources are billed and collected by the ASO, on behalf of Benton and Franklin Counties (PT)

**ITA Judicial (Out of ASO) Yakima:** Estimated ITA judicial revenue GCBH will attempt to recover from other ASOs, for ITA commitments held in Yakima County courts. These resources are billed and collected by the ASO, on behalf of Yakima County **(PT)**

**PIHP-Medicaid (Crisis Services):** Medicaid Revenue paid by the Managed Care Organizations (MCO) to the ASO for provision of Crisis Services to Medicaid eligible individuals within the region. **(MO)**

**Investment Interest:** Interest income earned by the ASO on behalf of its reserves. **(SO)**

## **CY23 ASO Expenditure Budget**

### **SALARIES: (1000)**

Each Full Time Equivalent (FTE) position will continue or begin employment with the ASO on January 1, 2024. GCBH Personnel Committee approved a 8% Cost of Living Increase that has been included in the attached draft budget. All positions in the attached budget are also listed on the attached GCBH-ASO CY24 Organizational Chart with the exception of the 3 current vacancies (1- Fiscal and 2 IT). **(See Attachment-3)**

### **BENEFITS: (2000)**

Employee benefits associated with the staffing levels included in the budget.

### **SUPPLIES: (3000)**

Based on previous ASO three year's expenditures due to COVID during 2020/2021.

### **OTHER ADMIN (4000)**

Based on previous ASO three year's expenditures due to COVID during 2020/2021 experience.

### **PROVIDER PAYMENTS (5000)**

**Crisis Services-Medicaid:** Direct Services payments made to provider network for Crisis Services provided to Medicaid eligible individuals. **(MO)**

**Crisis Services (State-Only):** Direct Services payments made to provider network for Crisis Services provided to Non-Medicaid individuals. **(SO)**

**Jail Proviso Funding:** Direct Services payments made to providers for mental health services in a local jail setting. **(PT)**



**CJTA and CJTA Additional Proviso Funding:** Direct Services payments made to provider network for substance use disorder court related treatment alternatives and/or County Therapeutic Courts for the creation or expansion of services. (PT)

**DCA (Dedicated Cannabis Account) Proviso Funding:** Direct Services to provide a) outpatient and residential SUD treatment for youth and children; b) PPW case management, housing supports and residential treatment programs; c) contracts for specialized fetal alcohol services; d) youth drug courts; and e) programs that support intervention and recovery support services for middle school and high school aged students. All new program services must direct at least 85% of funding to evidence-based or research-based programs and practices. (PT)

#### **OTHER PAYMENTS: Service Providers (4000)**

**ITA Judicial (Out of ASO-Benton and Franklin):** Costs for other ASOs for ITA commitments held in Benton and Franklin County courts. (PT)

**ITA Judicial (Out of ASO-Yakima):** Costs for other ASOs for ITA commitments held in Yakima County courts. (PT)

**Proviso 5480 Funding:** Funding for ASO use for ITA Costs. (PT)

**HARPS State Only:** Costs for short term housing subsidies for individuals with BH issues. (PT)

**Trueblood Misdemeanor Diversion Funds:** Costs for non-Medicaid costs associated with serving individuals in crisis triage, outpatient restoration, Forensic PATH, Forensic HARPS, or other programs that divert individuals with behavioral health disorders from the criminal justice system. (SO)

**E&T Discharge Planners:** Costs for a position solely responsible for discharge planning. (PT)

**Behavioral Health Enhancements:** Employee retention and recruitment for the implementation of regional enhancement plans originally funded under ESSB 6032 and continued in ESHB 1109.SL Section 215(23). State Only Portion (PT)

**SB 5092(65) Added Crisis Teams/including Child Crisis Teams:** Costs to support the purchase of new mobile crisis team capacity or enhancing existing mobile crisis staffing and to add or enhance youth/child Mobile crisis teams. (PT)

**HB 1773 AOT LRA/LRO Service and Hearing Funds** – Funding for treatment and hearing costs specific to enhanced AOT LRA/LRO Program. (PT)



**SB 5073 - ASO monitoring Conditional Release/Less Restrictive Alternative** – Costs to support resources needed to coordinate and manage Non-Medicaid Conditional Release Individuals in transitional status who will transfer back to the region they resided in prior to entering the state hospital upon completion of transitional care. (PT)

**SB 5476 Blake decision Navigator Program** – Costs available for the recovery navigator plan that meets program requirements including demonstrating the ability to fully comply with statewide program standards. (PT)

**FBG-Mental Health (MHBG-Primary) Block Grant:** Pass through payments made to providers for services specific to the FBG-MH contract requirements (PT)

**FBG-Substance Use Disorder (SABG-Primary) Block Grant:** Pass through payments made to providers for services specific to the FBG-SUD contract requirements (PT)

**FBG-Mental Health (MHBG-COVID) COVID MH Block Grant:** Pass through payments made to providers for services specific to the COVID FBG-MH contract requirements (PT)

**FBG-Substance Use Disorder (SABG-COVID) COVID SUD Block Grant:** Pass through payments made to providers for services specific to the COVID FBG-SUD contract requirements (PT)

**FBG-Mental Health (MHBG-ARPA) ARPA MH Block Grant:** Pass through payments made to providers for services specific to the ARPA FBG-MH contract requirements (PT)

**FBG-Substance Use Disorder (SABG-ARPA) ARPA SUD Block Grant:** Pass through payments made to providers for services specific to the ARPA FBG-SUD contract requirements (PT)

**Federal Block Grant Peer Bridger:** Regional Funding allocation for CY24 per ASO-HCA contract. (PT)

**Federal Block Grant SB 5071 - Full FY amount available - Provider cost of monitoring CR/LRA State Hospital discharged individual:** Costs to support the treatment services for individuals released from a state hospital in accordance with RCW 10.77.086(4), competency restoration. BH-ASOs may submit an A-19, not to exceed \$9,000 per Individual. Amounts are statewide pooled funds and are limited to funds available. (PT)

**Federal Block Grant - HARPS (Housing and Recovery through Peer Services) - GRANT:** Grant to support staffing for housing subsidies for individuals with BH issues per ASO-HCA Contract. (PT)

**Governor's Housing/Homeless Initiative:** For Rental Vouchers and Bridge Program Funds to create a rental voucher and bridge program and implement strategies to

reduce instances where an individual leave a state operated behavioral or private behavioral health facility directly into homelessness. Funds must be prioritized for individuals being discharged from state operated behavioral health facilities. **(PT)**

**CBRA (Community Behavioral Health Rental Assistance Program) GRANT:** Grant for long-term housing subsidies for individuals with BH conditions per ASO-DOC Contract. **(PT)**

The expenditure categories listed above will be considered 100% pass-through for budgeting purposes. The majority of these expenditures will be made using specific guidelines listed in the ASO contracts.

**1-800 Regional Crisis Triage Telephone:** A requirement of the ASO contract. The region must maintain a 24/7 Regional Triage Crisis line that is toll-free. The allocation of these costs will be based on call volume. **(SPLIT)**

**FYSPRT Program Costs:** Family Youth System Partner Roundtable Regional Program costs related to the program. **(SO)**

**ITA Judicial Costs (Benton-Franklin):** Estimated usage – ITA Court costs held within Benton and Franklin Counties for GCBH RSA individuals. **(SO)**

**ITA Judicial Costs (Yakima):** Estimated usage – ITA Court costs held within Yakima County for GCBH RSA individuals. **(SO)**

**ITA Judicial Costs (Other – From Out of ASO):** Estimated usage – ITA Court costs for GCBH RSA Individuals detained in other Washington State-ASO RSA's. **(SO)**

**MOP Inpatient Billings:** Estimated expenditures for GCBH region using a three year average SO inpatient usage. **(SO)**

**Youth Navigator Program:** Estimated expenditures for Youth Navigator Program assistance program. **(SO)**

**Secure Detox:** Estimated expenditures for GCBH region using a three year average Secure Detox ITA's usage. **(SO)**

**E & T (MH) Other:** Estimated costs individuals involuntary admitted to an E&T outside the regional service area. **(SO)**

**Two-Rivers Landing E & T:** Estimated cost of State-Only individuals involuntary admitted the TRL E&T in Yakima. **(SO)**

**Bridges E & T:** Estimated cost of State-Only individuals involuntary admitted to Bridges E & T in Yakima. **(SO)**

## MIS EXPENDITURES (4000)

**Management Information Systems:** Estimated costs of maintaining the GCBH-ASO IT system. **(SPLIT)**

## GCBH-ASO

CY24 Combined Revenue &amp; Expenditure Estimate (Preliminary Budget)

Attachment - 1

	<u>Yearly</u>	<u>Monthly</u>
<b><u>Estimated Revenue</u></b>		
Medicaid Revenue	\$ 9,030,659	\$ 752,555
State Only Revenue	\$ 22,732,298	\$ 1,894,358
Block Grants -MHBG & SABG Primary	\$ 2,427,222	\$ 202,269
Block Grants - Peer Bridger	\$ 240,000	\$ 20,000
Block Grants - SB5071 CR/LRA	\$ 63,000	\$ 5,250
Block Grants - HARPS	\$ 316,379	\$ 26,365
Block Grants - CBRA	\$ 1,354,422	\$ 112,869
Block Grants - COVID - MHBG & SABG	\$ 990,771	\$ 82,564
Block Grants - APRA - MHBG & SABG	\$ 2,754,760	\$ 195,828
<b>Estimated Revenues</b>	<b>\$ 39,909,511</b>	<b>\$ 3,292,057</b>
<b><u>Estimated Expenditures:</u></b>		
Wages	\$ 1,966,593	\$ 163,883
Benefits	\$ 701,000	\$ 58,417
Other Admin	\$ 467,000	\$ 38,917
<b>ASO Business Office</b>	<b>\$ 3,134,593</b>	<b>\$ 261,216</b>
Block Grants PT	\$ 4,401,023	\$ 366,752
Block Grants - COVID - PT	\$ 990,771	\$ 82,564
Block Grants - ARPA COVID - PT	\$ 2,754,760	\$ 195,828
Direct Services Non-Medicaid PT	\$ 9,383,246	\$ 781,937
Direct Services - 800# Crisis Line/IS	\$ 1,091,000	\$ 90,917
Direct Services Non Medicaid Inpatient/E&T/Secur	\$ 4,980,000	\$ 415,000
Direct Services Non-Medicaid - Crisis Services	\$ 6,488,296	\$ 540,691
Direct Services Medicaid - Crisis Services	\$ 6,685,822	\$ 557,152
<b>Direct Services</b>	<b>\$ 36,774,918</b>	<b>\$ 3,030,841</b>
<b>Estimated Expenditure</b>	<b>\$ 39,909,511</b>	<b>\$ 3,292,057</b>

**(Attachment-1)**  
**Estimated Revenue & Expenditures**

GCBH-ASO LLC  
CY 2024 Preliminary Budget  
Budget Summary  
Attachment -2

		<u>Monthly</u>	
<b>Estimated Revenue (CY24)</b>	<b>\$ 39,909,511</b>	<b>3,325,793</b>	
ASO Business Office			
Estimated Expenditures (CY24)	(3,134,593)	(261,216)	-8%
Other Direct Services			
Estimated Expenditures (CY24)	(6,371,000)	(530,917)	
Direct Service-Crisis (Medicaid)	(6,685,822)	(557,152)	
Direct Service-Crisis (Non-Medicaid)	(6,488,296)	(540,691)	
Direct Services-Pass-Through Expenditures	(17,229,800)	(1,435,817)	
<b>Estimated Expenditures</b>	<b>(39,909,511)</b>		
		(3,064,576)	-92%
		Direct Services	
<b>Estimated Ending Reserve &amp; Fund Balance</b>	<b>(1,796,298)</b>		Set by HCA

**(Attachment - 2)**

GCBH ASO Preliminary Budget-Summary

# GREATER COLUMBIA BEHAVIORAL HEALTH, LLC. BH-ASO

## (Attachment-2 Preliminary CY24 Budget Detail

REVENUE BUDGET					
	PRELIMINARY	ADJ	FINAL		
	CY24 BUDGET	CY24 BUDGET	CY24 BUDGET		
Grants					
Federal Block Grant - Mental Health (MHBG-Primary)	719,948		719,948		PT
Federal Block Grant - SUD (SABG-Primary)	1,707,274		1,707,274		PT
Federal Block Grant - Mental Health (MHBG-COVID)	133,000		133,000		PT
Federal Block Grant - SUD (SABG-COVID)	857,771		857,771		PT
Federal Block Grant - Mental Health (MHBG-ARPA)	1,921,204		1,921,204		PT
Federal Block Grant - SUD (SABG-ARPA)	833,556		833,556		PT
Federal Block Grant - Peer Bridger Grant	240,000		240,000		PT
Fed -SB5071 - CRLRA Monitoring State Hospital Discharge	63,000		63,000		PT
Federal Block Grant - HARPS Grant	281,380		281,380		PT
Federal Block Grant - HARPS Expansion Grant	34,999		34,999		PT
Dept of Commerce - CBRA Grant	1,354,422		1,354,422		PT
State-Only	12,903,552		12,903,552	60%	SO
CJTA Base & Addtl'l Funding - Proviso	1,209,252		1,209,252		PT
DCA Funding - Proviso	262,440		262,440		PT
Funding - PACT Yakima - Proviso	653,664		653,664		PT
New Journeys FEP SO Only - Proviso	102,336		102,336		PT
Jail Funding - Proviso	282,636		282,636		PT
TrueBlood Misdeamor Diversion Funds - Proviso	92,664		92,664		PT
Discharge Planner - Proviso	143,058		143,058		PT
BH Enhancement Funds - Proviso	452,928		452,928		PT
SB5092(65) - Enhanced Crisis Teams/including Child Crisis Teams	891,882		891,882		PT
SUD Navigator Program Proviso	4,048,486		4,048,486		SO/Adm
AOT Program Admin - Lead Proviso	140,000		140,000		Admin
AOT Program Services HB1773	157,900		157,900		Admin
Youth Inpatient Navigator Program Resources Proviso	404,500		404,500		SO/Adm
FYSPT State Only Proviso	75,000		75,000		SO/Adm
HARPS State Only	426,000		426,000		PT
Governor's Housing/Homeless Rental Voucher	50,000		50,000		PT
ITA Judicial (Out of ASO) Benton/Franklin	30,000		30,000		PT
ITA Judicial (Out of ASO) Yakima	250,000		250,000		PT
				40%	
PIHP (Medicaid-Crisis Services)	9,030,659		9,030,659		MO
Investment Interest	156,000		156,000		SPLIT
Miscellaneous Income	-		-		SPLIT
ESTIMATED REVENUE	\$ 39,909,511	\$ -	\$ 39,909,511		



## ESTIMATED FUNDS AVAILABLE

\$	39,909,511	\$	-	\$	39,909,511
----	------------	----	---	----	------------

## CY24 Expenditure Budget

SALARIES	\$	1,966,593	\$	-	\$	1,966,593	\$	1,966,593	SPLIT	60%	40%
								\$			
								\$			
BENEFITS	\$	701,000	\$	-	\$	701,000	\$	701,000	SPLIT	60%	40%
								\$			
								\$			
Office Supplies		15,000				15,000					
Vehicle Fuel		4,000				4,000					
Small Items/Equipment		15,000				15,000					
SUBTOTAL SUPPLIES	\$	34,000	\$	-	\$	34,000	\$	34,000	SPLIT	60%	40%
								\$			
								\$			
Legal Services		78,000				78,000					
Contract Services		50,000				50,000					
Medicaid Director		48,000				48,000					
Janitorial		3,500				3,500					
Landscaping/Grounds Maintenance		5,500				5,500					
Postage		3,000				3,000					
Telephone		35,000				35,000					
Travel		30,000				30,000					
Behavioral Health Advisory Board (BHAB)		40,000				40,000					
Legal Notice/Advertising		2,000				2,000					
Rental/Office Equipment		20,000				20,000					
Insurance		35,000				35,000					
Utilities		20,000				20,000					
Repair/Maintenance (Office)		10,000				10,000					
Repair/Maintenance (Vehicle)		5,000				5,000					
Dues		35,000				35,000					
Training		10,000				10,000					
Use Tax		3,000				3,000					
OTHER ADMINISTRATION	\$	433,000	\$	-	\$	433,000	\$	433,000	SPLIT	60%	40%
								\$			
								\$			





CY24 Expenditure Budget

MH E & T (Other)
TRL E&T (SO)
Bridges E & T (SO)

PRELIMINARY	ADJUSTMENTS	FINAL
CY24 BUDGET		CY24 BUDGET
950,000		950,000
60,000		60,000
550,000		550,000

SO
SO
SO

Other Service Providers

\$ 21,346,472	\$ -	\$ 21,346,472	\$ 21,346,472
			15,475,472
			4,980,000
			891,000

PT
SO
MO

564.917 Management Information System

500,000		500,000	500,000
			300,000
			200,000

SPLIT
60%
40%

GCBH MIS Expense

\$ 500,000	\$ -	\$ 500,000	\$ 500,000
------------	------	------------	------------

TOTAL USES

\$ 39,909,511	\$ -	\$ 39,909,511	
---------------	------	---------------	--

Less: Reserve Balance

-
---

TOTAL FUNDING AVAILABLE

\$ -
------

SUMMARY

SPLIT Costs (Admin)  
SO Split  
Medicaid Split

3,134,593
1,880,756
1,253,837

Medicaid Revenue

12%	1,083,679	9,030,659
-----	-----------	-----------

Medicaid

Less: Admin

(1,253,837)
-------------

Medicaid

Direct-Other

(1,091,000)
-------------

Monthly

(557,152)
-----------

Medicaid

Direct-Crisis

(6,685,822)
-------------

Pass-Through

Direct-Other

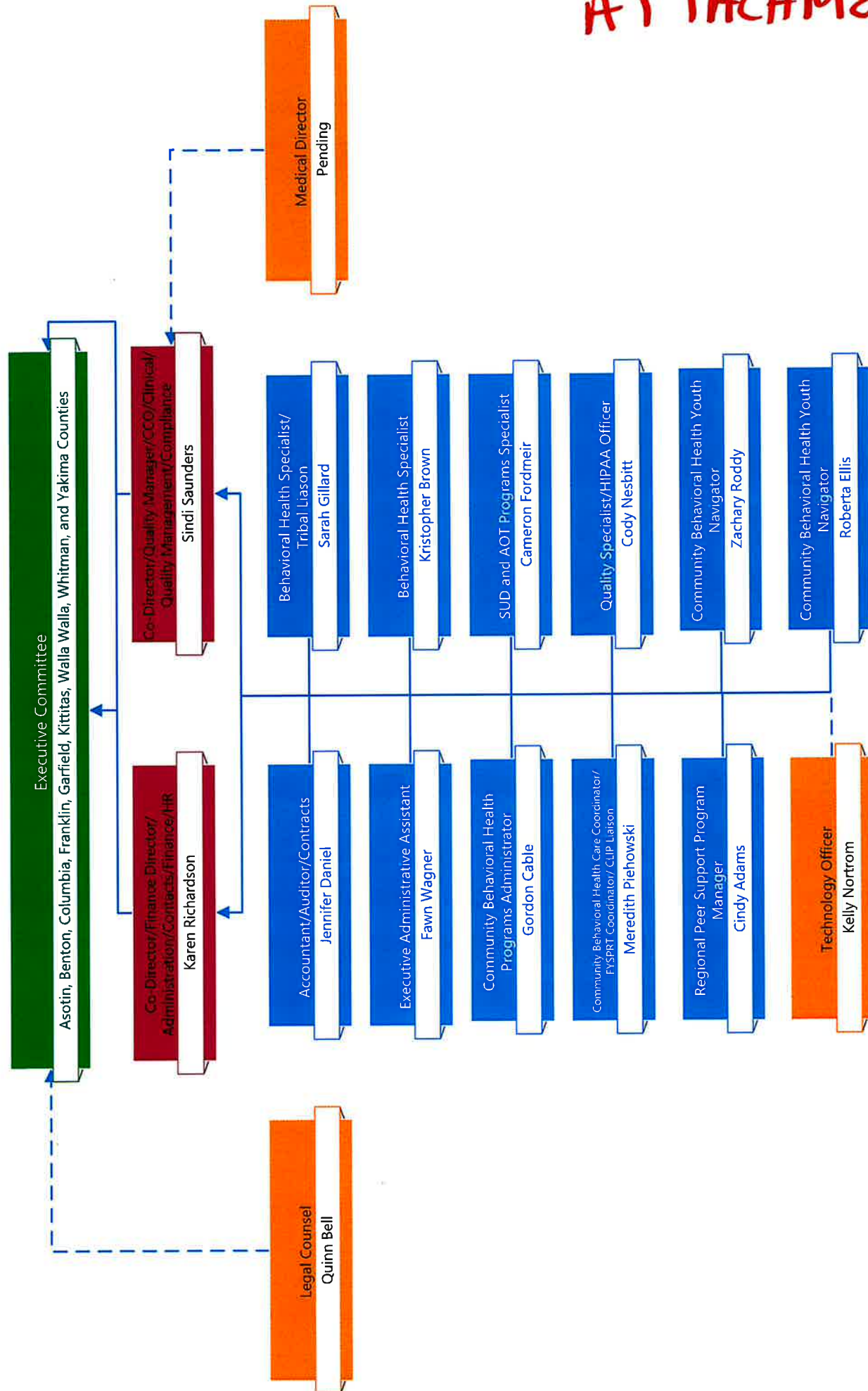
(17,229,800)
--------------

SO Revenue

15%	2,017,379	13,449,192
-----	-----------	------------

CY24 Expenditure Budget			
PRELIMINARY		ADJUSTMENTS	FINAL
CY24 BUDGET			CY24 BUDGET
			(1,880,756)
Less: Admin			
Direct-Other			(5,280,000)
Ending Reserve			
Monthly		(540,691)	
Direct -Crisis			(6,488,296)
			(13,174,118)

# Greater Columbia Behavioral Health, LLC. BH-ASO



ATTACHMENT 3



# GREATER COLUMBIA BEHAVIORAL HEALTH, LLC. BH-ASO

## Policies and Procedures

Category: Fiscal Management  
 Approved On: 12/05/2019  
 Approved By: The Executive Directors  
 Revised: 12-3-2021; 12-1-2022; 12-7-2023  
 Effective Date: 01-01-2024

No: FM804

Title: **Funding Allocation Policy (ASO)**

### DEFINITIONS

**ADMINISTRATIVE SERVICES ORGANIZATION (ASO):** An entity formed to administer Behavioral Health Crisis Services through contracts with the State Healthcare Authority (HCA) and 4 regional Managed Care Organizations.

**JAIL PROVISIO FUNDING:** Funding to provide mental health services for mentally ill offenders while confined in a county or city jail. These services are intended to facilitate access to programs that offer mental health service upon mentally ill offenders' release from confinement. This includes efforts to expedite applications for new or re-instated Medicaid benefits.

**CJTA – CRIMINAL JUSTICE TREATMENT ACCOUNT:** Funds received, through a designated account in the State treasury, for expenditure on: a) SUD treatment and treatment support services for offenders with an addition of a SUD that, if not treated, would result in addiction, against whom charges are filed by a prosecuting attorney in Washington State; b) the provision of drug and alcohol treatment services and treatment support services for nonviolent offenders within a drug court program.

**CJTA Therapeutic Drug Court:** Funding to set up of new therapeutic courts for cities or counties or for the expansion of services being provided to an already existing therapeutic court that engages in evidence-based practices, to include medication assisted treatment in jail settings pursuant to RCW 71.24.580.

**DCA – DEDICATED CANNABIS ACCOUNT:** Funding to provide a) outpatient and residential SUD Treatment for youth and children; b) PPW case management, housing supports and residential treatment program; c) contracts for specialized fetal alcohol services; d) youth drug courts; and e) programs that support intervention, treatment, and recovery support services for middle and high school aged students. All new programs services must direct at least eighty-five percent of funding to evidence-based on research-based programs and practices.

**MEDICAID REVENUE-MH(PIMP):** Capitation payment received by the ASO on a per member per month basis to provide contracted Mental Health and Substance Use Disorder Crisis Services on behalf of the MCOs.

**STATE-ONLY FUNDING:** Funds appropriated by the state legislature for the purpose of providing prioritized levels of care not covered by Medicaid. They include Crisis Services, Inpatient Hospitalization, Stabilization Services, Secure Detox, MH and SUD Residential treatment and supports, ITA related costs, and when available Other Outpatient Services not covered under Medicaid.

**PACT TEAM FUNDING:** The MCOs in the region will manage the Medicaid portion of this funding, while the ASO will be asked to manage the SO portion. These resources are only available for funding of the GCBH PACT Team(s).

**FEDERAL BLOCK GRANTS:** Direct and Indirect Federal dollars allocated to the GCBH-ASO region for use providing both Mental Health and Substance Use Disorder treatment to individuals not covered by Medicaid, or for services to Medicaid individuals that are not covered by Medicaid.

**BEHAVIORAL HEALTH ENHANCEMENT FUNDS:** Funding for the implementation of regional enhancement plans originally funded under ESSB 6032 and continued in ESHB 1109.SL Section 215(23).

**DISCHARGE PLANNERS:** Funds received for a position solely responsible for discharge planning.

**TRUEBLOOD MISDEMEANOR DIVERSION FUNDS:** Funds for non-Medicaid costed associated with serving individuals in crisis triage, outpatient restoration, Forensic PATH, Forensic HARPS, or other programs that divert individuals with behavioral health disorders from the criminal justice system.

**FUNDS AVAILABLE FOR DISTRIBUTION:** A term used to describe resources available for distribution to the provider network during a given period of time that is to be used for providing BH treatment to non-Medicaid individuals and or services not covered by Medicaid.

## **METHODOLOGY**

A clear separation of Federal and State Dollars was initiated by the Department of Social and Health Services (DSHS) and Healthcare Authority. Contract requirements initiated by the Center for Medicare and Medicaid Services (CMS) state that only Medicaid individuals be served using Medicaid resources.

In keeping with these requirements, the FY24 monthly funding distributions made by Greater Columbia Behavioral Health ASO (GCBH-ASO) will be prioritized in the following order:

**State-Only Funding** is distributed to the provider network based on the percentage of general population listed for each county of the RSA on the State of Washington Office of Financial Management website for April 2022. State-Only Funding will include all state based revenue streams that are not specifically spelled out as State Proviso Funds

**PIHP Funding (Medicaid)** is distributed to the network based on the number of Medicaid Eligible Individuals residing in each county of the RSA.

**Federal Block Grant Funding** is first allocated to counties based on general population and then need. Network Providers may then submit plan documents describing how these resources will be used during the upcoming contract cycle. In some instances, grant funding may be allocated to a different service provider if the original provider is unable to expend these resources in a given year. These plans are then approved by the Behavioral Health Advisory Board, the State Advisory Board, and the GCBH Executive Committee. In the event a network provider is unable to expend its allocation of FBG funding during the contract cycle, available resources can be shifted to another program within the GCBH catchment area.

**PACT:** The funding to pay the SO portion of a PACT Team in Yakima County that is run by Comprehensive Healthcare.



**JAIL Proviso:** Funding is first allocated to counties based on general population and released to the provider network to provide mental health services for mentally ill offenders while confined in a county or city jail. These services are intended to facilitate access to programs that offer mental health service upon mentally ill offenders' release from confinement. This includes efforts to expedite applications for new or re-instituted Medicaid benefits.

**CJTA – CRIMINAL JUSTICE TREATMENT ACCOUNT Proviso:** Funding is first allocated to counties based on general population and released to the provider network, through a designated account in the State treasury, for expenditure on: a) SUD treatment and treatment support services for offenders with an addition of a SUD that, if not treated, would result in addiction, against whom charges are filed by a prosecuting attorney in Washington State; b) the provision of drug and alcohol treatment services and treatment support services for nonviolent offenders within a drug court program.

**CJTA Therapeutic Drug Court Proviso:** Funding is first allocated to counties based on general population and released to the provider network to set up of new therapeutic courts for cities or counties or for the expansion of services being provided to an already existing therapeutic court that engages in evidence-based practices, to include medication assisted treatment in jail settings pursuant to RCW 71.24.580.

**DCA – DEDICATED CANNABIS ACCOUNT Proviso:** Funding is first allocated to counties based on general population and released to the provider network to provide a) outpatient and residential SUD Treatment for youth and children; b) PPW case management, housing supports and residential treatment program; c) contracts for specialized fetal alcohol services; d) youth drug courts; and e) programs that support intervention, treatment, and recovery support services for middle and high school aged students. All new programs services must direct at least eighty-five percent of funding to evidence-based on research-based programs and practices.

**BEHAVIORAL HEALTH ENHANCEMENT FUNDS Proviso:** Funding is first allocated to counties based on general population and released to the state only provider network for the implementation of regional enhancement plans originally funded under ESSB 6032 and continued in ESHB 1109.SL Section 215(23).

**E&T DISCHARGE PLANNERS Proviso:** Funds received for a position solely responsible for discharge planning with the contracted network provider.

**TRUEBLOOD MISDEMEANOR DIVERSION FUNDS:** Funds for non-Medicaid costed associated with serving individuals in crisis triage, outpatient restoration, Forensic PATH, Forensic HARPS, or other programs that divert individuals with behavioral health disorders from the criminal justice system.

**HARPS (State Only and Block Grant Funding):** A program that helps find housing and provides housing supports to GCBH individuals in Walla Walla County and other counties that Comprehensive operates within the RSA.

**Governor's Housing/Homeless Initiative:** For Rental Vouchers and Bridge Program Funds to create a rental voucher and bridge program and implement strategies to reduce instances where an individual leave a state operated behavioral or private behavioral health facility directly into homelessness. Funds must be prioritized for individuals being discharged from state operated behavioral health facilities.

**FYSPRT:** GCBH is required to maintain a Regional FYSPRT committee as part contract requirements. The funding for the FYSPRT is very specific and can only be used for costs associated with the FYSPRT committee.



**SB 5092(65) Added Crisis Teams/including Child Crisis Teams:** Funds to support the purchase of new mobile crisis team capacity or enhancing existing mobile crisis staffing and to add to enhance youth/child Mobile crisis teams.

**SB 5476 Blake decision – SUD Regional Administrator:** Funds to support the regional administrator position responsible for assuring compliance with the recover navigator program standards, including staffing standards.

**SB 5476 Blake decision Navigator Program:** Funds available to implement the recovery navigator plan that meets program requirements including demonstrating the ability to fully comply with statewide program standards.

**Youth Behavioral Health Navigator Program:** Funds to develop a regional multidisciplinary team designed to improve access to and coordination of services for children and youth experiencing behavioral health crises.

**SB 5073 – ASO monitoring Conditional Release/Less Restrictive Alternative:** Funds to support resources needed to coordinate and manage Non-Medicaid conditional Release Individuals in transitional status who will transfer back to the region they resided in prior to entering the state hospital upon completion of transitional care.

**HB 1773 AOT LRA/LRO FTE Coordinator to ASO –** Funds for each BH-ASO to employ or subcontract an Assisted Outpatient Treatment Program Coordinator. The AOT Coordinator will oversee the system coordination and legal compliance for assisted outpatient treatment under RCW 71.05.148 and RCW 71.34.755.

**HB 1773 AOT LRA/LRO Service and Hearing Funds –** Funding for treatment and hearing costs specific to enhanced AOT LRA/LRO Program.

**SB 5071– Full FY amount available – Provider cost of monitoring CR/LRA State Hospital discharged Individual:** Funds to support the treatment services for Individuals released from a state hospital in accordance with RCW 10.77.086(4), competency restoration. BH-ASOs may submit an A-19, not to exceed \$9,000 per Individual. Amounts are statewide pooled funds and are limited to funds available.

**MHBG Covid (BH-ASO) Peer Pathfinders Transition from Incarceration Pilot:** Funds to support the Peer Pathfinders Transition from Incarceration Pilot Program intended to serve Individuals exiting correctional facilities in Washington State who have either a serious mental illness or co-occurring conditions.

**MHBG ARPA (BH-ASO) Peer Pathfinders Transition from Incarceration Pilot:** Funds to support the Peer Pathfinders Transition from Incarceration Pilot Program intended to serve Individuals exiting correctional facilities in Washington State who have either a serious mental illness or co-occurring conditions

**MHBG ARPA Enhancement Treatment – Crisis Services:** Funds to supplement Non-Medicaid Individuals and Non-Medicaid crisis services and systems.

**MHBG ARPA Enhancement Mental Health Services Non-Medicaid services and Individuals:** Funds to supplement Non-Medicaid Individuals and Non-Medicaid mental health services that meet MHBG requirements.

**MHBG Co-Responder funds:** Funds to support grants to law enforcement and other first responders to include a mental health professional on the team of personnel responding to emergencies within regions.

**SABG Co-Responder funds:** Funds to support grants to law enforcement and other first responders to include a mental health professional on the team of personnel responding to emergencies within regions.

**MHBG ARPA Enhancement – Peer Bridger Participant Relief Funds:** Peer Bridger Participants Relief Funds to assist Individual's with engaging, re-engaging, and supporting service retention aligned/associated with continuing in treatment for mental health and/or SUD.

**MHBG ARPA Enhancement – Addition of Certified Peer Counselor to BH-ASO Mobile Crisis Response Teams:** FBG Stimulus funds for Contractor to enhance mobile crisis services by adding certified peer counselors.

**SABG Covid Enhancement BH-ASO Treatment Funding:** Funds to supplement Non-Medicaid Individuals and Non-Medicaid Substance Use Disorder services that meet federal block grant requirements.

**SABG ARPA Enhancement BH-ASO Treatment Funding:** Funds to supplement Non-Medicaid Individuals and Non-Medicaid Substance Use Disorder services that meet federal block grant requirements.

**SABG ARPA Enhance Peer Pathfinders Transition from Incarceration Pilot:** Funds to support the Peer Pathfinders Transition from Incarceration Pilot Program intended to serve Individuals who are exiting correctional facilities in Washington State who have a substance use disorder or co-occurring condition.

Utilization of funding by the GCBH Provider Network must continue to follow the terms and conditions listed in each of the GCBH Mental Health and Substance Use Disorder contracts under both the State (HealthCare Authority) and Medicaid (Managed Care Organizations). These contracts detail specific elements of the Behavioral Health Service System and are identified in the contract between GCBH and the State Health Care Authority and the 4 Managed Care Organizations.

It is the policy of GCBH that upon meeting contract reserve requirements, any and all funds received by the ASO on or before the end of budget cycle will be released to the provider network when applicable. These amounts, when determined at the close of each fiscal year, will be distributed using the allocation methods listed above, or upon Executive Committee approval, used to fund ASO wide special projects such as Infrastructure improvements, Capital purchases, or other projects deemed beneficial to the individuals served by GCBH.

Scheduled Review of this Procedure:

**The Funding Allocation Policy will be reviewed as needed in order for the ASO to gain a better understanding of funding levels for the ASO. Certain aspects of the HCA Contract for State Only Funding and the 4 MCO contracts continue to change throughout the 12 month picture of how actual funding levels for Non-Medicaid and Medicaid individuals will be achieved.**

Because of this, it has been determined that the ASO Executive Committee will re-evaluate the Funding Policy as needed.

## APPROVAL

---

Karen Richardson or Sindi Saunders  
GCBH Co-Directors

---

Date

DRAFT



## Notice of Hearing:

NOTICE IS HEREBY GIVEN: That Greater Columbia Behavioral Health, LLC BH-ASO has on file its Preliminary January – December 2024 Budget, a copy of which may be requested by any citizen. NOTICE IS FURTHER GIVEN: That a hearing for the purpose of adopting a final budget for January – December 2024 will be held by the GCBH, LLC BH-ASO at its regular meeting Monday, December 7, 2023 at 9:30 am at Greater Columbia Behavioral Health Office, Kennewick, WA at which time any person may appear either for or against the proposed budget.

GREATER COLUMBIA BEHAVIORAL HEALTH, LLC ASO

RESOLUTION # 24-01

IN THE MATTER OF ADOPTION OF THE GREATER COLUMBIA BEHAVIORAL HEALTH, LLC  
BH-ASO CALENDAR YEAR JANUARY – DECEMBER 2024 BUDGET

WHEREAS, the Executive Committee has reviewed the Calendar Year January – December 2024 preliminary budget; and

WHEREAS, the estimates of revenues and expenditures shall constitute the appropriations for the GCBH, LLC BH-ASO Fund Budget for the Calendar Year January – December 2024; and

WHEREAS, upon resolution by the GCBH Executive Committee supplemental appropriations to the budget from unanticipated funding may be made; NOW THEREFORE

BE IT RESOLVED that the attached Calendar Year January – December 2024 GCBH, LLC. BH-ASO bottom line budget totaling \$ 39,909,511 is hereby adopted, with the provision that once the Health Care Authority and Managed Care Organization's budget is released, additional modification to the budget may be required.

DATED this 7<sup>th</sup>, day of December, 2023.

\_\_\_\_\_  
Asotin County

\_\_\_\_\_  
Kittitas County

\_\_\_\_\_  
Benton County

\_\_\_\_\_  
Walla Walla County

\_\_\_\_\_  
Columbia County

\_\_\_\_\_  
Whitman County

\_\_\_\_\_  
Franklin County

\_\_\_\_\_  
Yakima County

\_\_\_\_\_  
Garfield County

Constituting the Executive Committee of  
Greater Columbia Behavioral Health